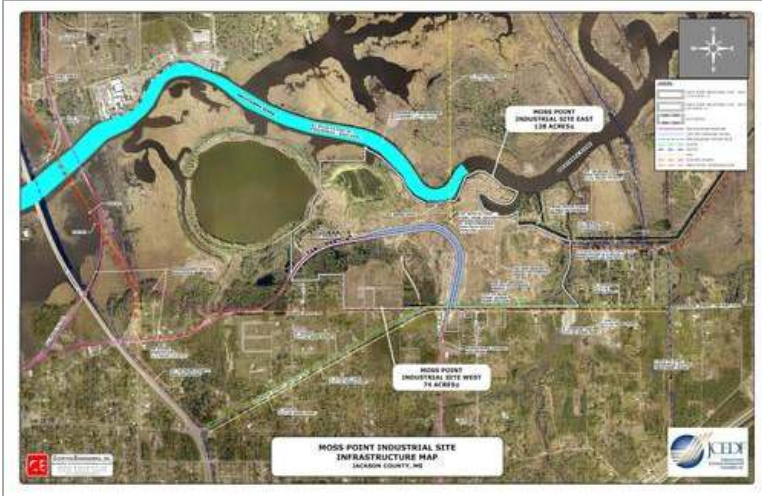


Moss Point Industrial Sites East & West

Grierson Street, Moss Point, Mississippi 39563 - Jackson County



Property Details

Latitude/Longitude: 30.4176, -88.4953

Type of space: Industrial

Min Size: 74 acres

Max Size: 128 acres

Last Updated: 11/21/2023

Economic Development

Company: Jackson County Economic Development Foundation, Inc.

Contact Name: Mary Martha Henson

Address: P.O. Box 1558

City: Moss Point

State: Mississippi

Phone: 228-769-6263

Cell: 228-623-1320

Fax: 228-762-8431

Email: mhenson@jcedf.org

Website: <https://www.jcedf.org/>

Documents

[East Moss Point Industrial Site \(128-acres\)\[1\].kmz](#)

Availability

For Sale: Yes

Lease Type: Negotiable

For Lease: Yes

Zoning: Industrial-Heavy

Ease of Development

Flood Plain: Yes

Utilities

Electric Service: Yes

Electric Service Provider: Mississippi Power Company

Voltage:

Natural Gas Service: Yes

Natural Gas Provider: Gulf South Pipeline

Natural Gas Line Size: 8 in

Water Service: Yes

Water Service Provider: City of Moss Point

Water Line Size: 8 in

Sewer Service: Yes

Sewer Provider: City of Moss Point

Sewer Line Size: 8 in

Fiber Optics: Yes

Telecom Provider: AT&T, Sparklight

Cooperative Energy Served: No

Environmental

Geotechnical Report: Yes

Nearest Airport: Gulfport-Biloxi International Airport

Distance to Airport: 41 miles

Airport 2: Trent Lott International Airport

Distance to Airport 2: 5

Port: Port of Pascagoula

Distance to Port: 6 miles

Port Name 2: Port of Mobile

Distance to Port 2: 39
Port 3: Escatawpa River
Distance to Port 3: 0
Nearest Interstate: Interstate 10
Distance to Interstate: 4 miles
Nearest Highway: Mississippi Highway 63
Distance to Major Highway: 1 miles
Highway Name 2: U.S. Highway 90
Distance to Highway 2: 2
Rail Adjacent to Site: Yes
Rail Access: Yes
Rail Provider: Mississippi Export Railroad Company
Distance to Rail: 0
Rail Spur on Site: Yes

Site Details

Lot Size: 74 sf
Contiguous Acres Available for Development: 128 acres
Total Acres: 202 acres
Topography: Flat
Property Description: Moss Point Industrial Sites East and West are located within one mile of four-lane Mississippi Highway 63 & four miles from Interstate 10. MP Site East contains 74 acres and MP Site West has 128 acres. The property is the former location of International Paper and offers prime redeveloped industrial property. This facility is uniquely positioned with ready infrastructure, including a rail spur on-site and barge access with a 12-foot federally maintained channel, terminating at the deepwater Port of Pascagoula. And abundant process & potable water, numerous waste disposal options & plentiful electric power, and gas capacity. It is included in the Foreign Trade Zone #92.

Building Details

Divisible: Yes
Buildable Acres: 128

Incentives

Foreign Trade Zone: Yes

Other

Community College District: Mississippi Gulf Coast Community College
Barge Access: Yes

Description

Located within 1 mile of the four-lane Mississippi Highway 63 & 4 miles from Interstate 10, the Moss Point Industrial Sites East and West are Jackson County's premier master-planned industrial development. On-site rail (Mississippi Export Railroad, connecting to CSX, CN, KCS, and NS), abundant process & potable water, numerous waste disposal options & plentiful electric power, and gas capacity. The site is included in the Foreign Trade Zone #92.

The highlight of the MP Industrial Site East is the existing barge access on a 12-foot federally maintained channel on Escatawpa River, which is approximately 10 miles away from the deep-water Port of Pascagoula.